

MC2000

ACCESSORIES

Electronic control valve

- MC2000 tilting and hydraulic locking need both one electronic control valve
- Electronic valve 6/2 technical specification:
 - Voltage 12 V
 - Connections 1/2"
 - Dimensions 210*100*70 mm
 - Stackable max. 5 kpl
 - Max. flow 80l/min
 - Max. pressure 250 bar

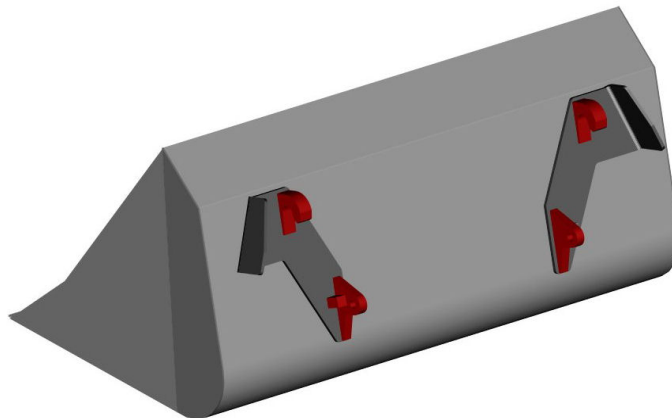


Assembly set for electronic control valve

- Includes electrical assembly parts for one valve
 - 3 wire cable (7m)
 - Electrical push button switch
 - Connectors
 - Fuse assy + fuse

Implement hooks with guiding plates

- Guiding plates centralize the implement automatically when used with MC2000
- Allows much wider tolerance when approach and pick up the implement
- Assembly by welding
- Available standard EURO (ISO 23206) and Vila/HKR



All rights reserved.

Pat. pending



HAL Greteco Oy
Kukonkyläntie 270
85310 SIEVI AS.

Puh: +358-50-5778166
Fax: +358-14-543077
e-mail: sales@halgreteco.fi
www.halgreteco.fi